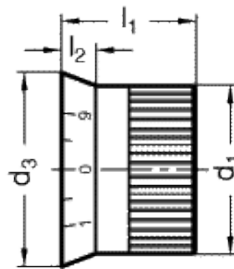
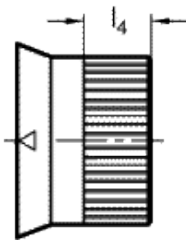
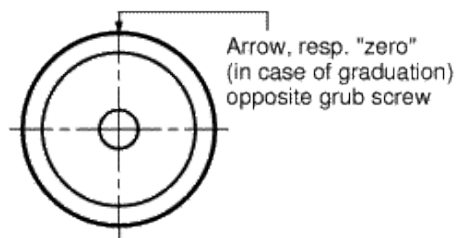
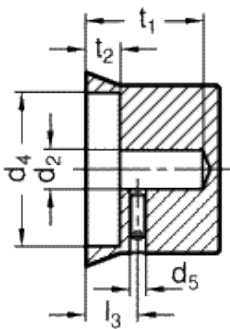


# GN 723.4

Control knobs



technical informations

## Material

Aluminium, anodised, natural colour.

## Standard versions available

- Version N neutral.
  - Version M with arrow.
  - Version S with scale 0...9, 20 graduation.
- Scale (Version S) and arrow (Version M) are engraved with laser precision.

## Grub screw

Stainless steel DIN 916 with internal hexagon and with serrated point.

*Special executions on request (For sufficient quantities)*

Control knobs with any type of graduation.

*Features and applications*

Control knobs GN 723.4 can be combined with reference flanges GN 723.3 which offer the following advantages:

- they are provided with a reference mark relating to the scale on the control knobs
- they give additional support to the control shaft,
- they can be fitted with end stop pins to limit the angular rotation,
- the version with a friction ring prevents unexpected movement through vibration.

Scale and reference marks on the control knobs are indelibly marked and easily legible. Regarding design, numbering run, numbering position and numbering sequence of the scale please see the layout for scale rings on the order sheet.

Standard Elements	Main dimensions									Mounting hole		Weight
Description	d <sub>1</sub>	d <sub>3 -0.2</sub>	d <sub>4</sub>	d <sub>5</sub>	l <sub>1</sub>	l <sub>2</sub>	l <sub>3</sub>	l <sub>4</sub>	t <sub>2</sub>	d <sub>2 H8</sub>	t <sub>1</sub>	g
GN 723.4-27-B6-N	27	33.5	23.5	M4	25.5	7.5	10.5	12.5	7.5	B6	23.5	40
GN 723.4-27-B6-M	27	33.5	23.5	M4	25.5	7.5	10.5	12.5	7.5	B6	23.5	40
GN 723.4-27-B6-S	27	33.5	23.5	M4	25.5	7.5	10.5	12.5	7.5	B6	23.5	40
GN 723.4-34-B6-N	34	41	29.5	M5	29.5	9.5	13.5	13	9.5	B6	26.5	60
GN 723.4-34-B6-M	34	41	29.5	M5	29.5	9.5	13.5	13	9.5	B6	26.5	60
GN 723.4-34-B6-S	34	41	29.5	M5	29.5	9.5	13.5	13	9.5	B6	26.5	53
GN 723.4-34-B8-N	34	41	29.5	M5	29.5	9.5	13.5	13	7.5	B8	26.5	53
GN 723.4-34-B8-M	34	41	29.5	M5	29.5	9.5	13.5	13	9.5	B8	26.5	53
GN 723.4-34-B8-S	34	41	29.5	M5	29.5	9.5	13.5	13	9.5	B8	26.5	66
GN 723.4-42-B8-N	42	49.5	37.5	M5	33.5	11.5	15.5	15	11.5	B8	30.5	100
GN 723.4-42-B8-M	42	49.5	37.5	M5	33.5	11.5	15.5	15	11.5	B8	30.5	100
GN 723.4-42-B8-S	42	49.5	37.5	M5	33.5	11.5	15.5	15	11.5	B8	30.5	100
GN 723.4-42-B10-N	42	49.5	37.5	M5	33.5	11.5	15.5	15	11.5	B10	30.5	80
GN 723.4-42-B10-M	42	49.5	37.5	M5	33.5	11.5	15.5	15	11.5	B10	30.5	80
GN 723.4-42-B10-S	42	49.5	37.5	M5	33.5	11.5	15.5	15	11.5	B10	30.5	80



STANDARD MACHINE ELEMENTS WORLDWIDE